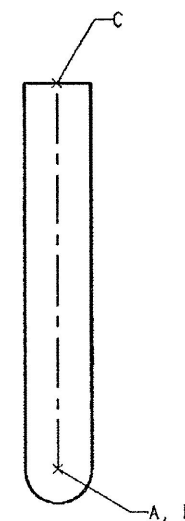
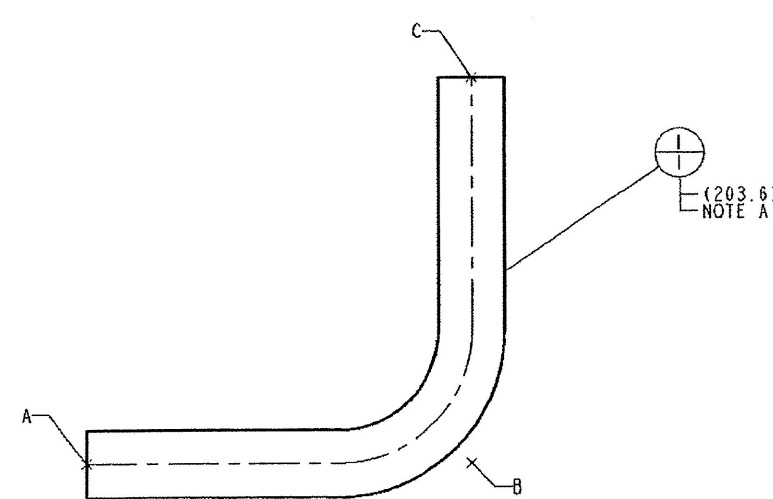
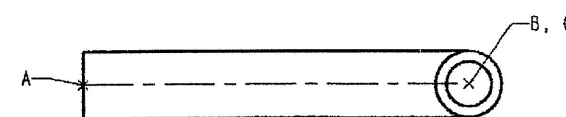
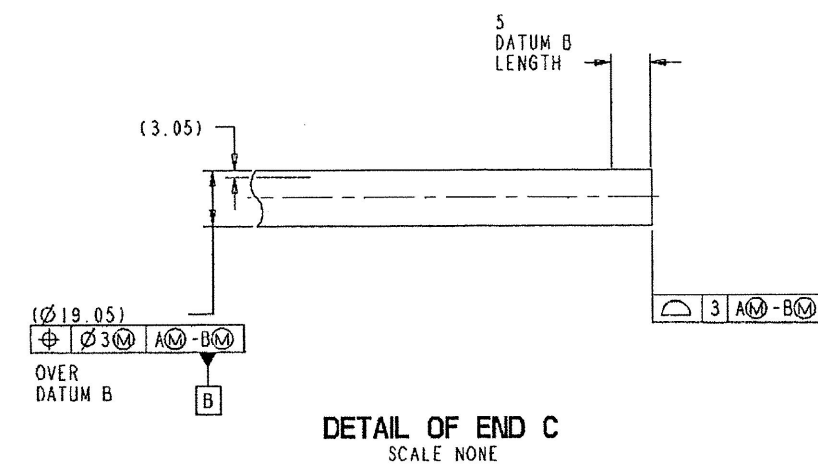
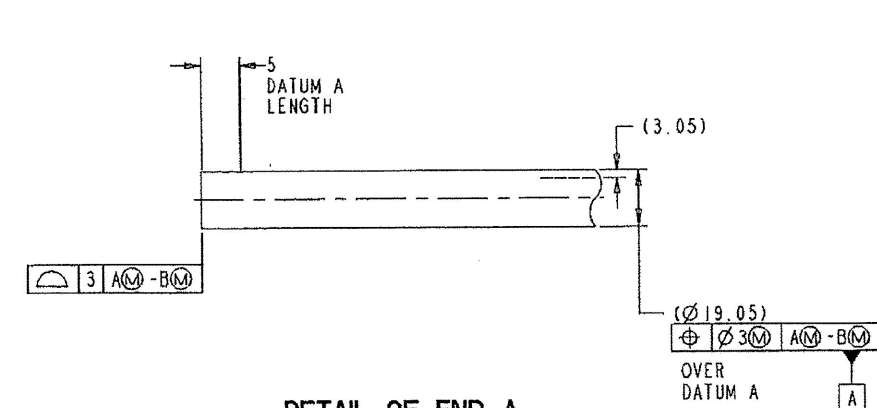


TUBE ASSEMBLY DATA				
TOP +Y +Z				
FRONT +Y +Z				
RIGHT +Y +Z				
PT	X	Y	Z	
A	0.0	0.0	0.0	
B	110.0	0.0	0.0	
C	110.0	110.0	0.0	
ALL STRAIGHT LENGTHS ( $\phi$ 3.00) (A-B-C)				TABLE ESTABLISHES DATUM REFERENCE FRAME AND BASIC DIMENSIONS FOR TUBE ASSEMBLY
NOMINAL TEST PRESSURE				2000 kPa
MIN. BURST PRESSURE				8000 kPa
WETTED SURFACE AREA (INTL SURF. ONLY)				0.008285 m <sup>2</sup>



METRIC 456-2341

ITEM	QTY	UNIT	PART NO.	NAME
1	21	cm	8T-0005	TUBE

REFERENCE ONLY BENT TUBE DATA FOR MFG. PURPOSES ONLY				
TOP +Y +Z				
FRONT +Y +Z				
RIGHT +Y +Z				
PT	X'	Y'	Z'	
A	0.0	0.0	0.0	
B	110.0	0.0	0.0	
C	110.0	110.0	0.0	
NOMINAL TUBE STRAIGHT LENGTH (EXCLUDING BENDS)				TABLE ESTABLISHES DATUM REFERENCE FRAME AND BASIC DIMENSIONS FOR TUBE ASSEMBLY
NOMINAL TEST PRESSURE				2000 kPa
MIN. BURST PRESSURE				8000 kPa
WETTED SURFACE AREA (INTL SURF. ONLY)				0.008285 m <sup>2</sup>

CALC  $\phi$  LG=203.6

ROT.  $\angle$  ARE TOT. CW ROT. FROM  
PLANE THRU POINTS ABC VIEWED  
FROM END A

- 1 -10- 2014  
ARCIV

NZ 14/01046

IE0526	STL TUBING
IE0357	STL
IE4617	INTPR
IE3000Y	DUAL CONT W107
IE2966B	IDENT
IE2722C	DRAWING
IE2688	REQ
IE2655	TOL
IE05076	IDENT
IE0498	PROTECTION
IE0467	TESTING
IE0318D	CLEANLINESS
IE0198R	BRAND MARKINGS
IE0013Y	
IE0012A	INTERPRETATION
IE0011	INTPR & TOL
PROD. X OTHER	
UNLESS OTHERWISE SPECIFIED DIMENSIONS ARE IN mm DIMENSIONS W/O TOL ARE BASIC	VERSION PRIMARY X TYPE SECONDARY
THIRD ANGLE PROJECTION	SHEET 1 OF 1 DWG CONTROL H326

NOTE A: TUBE  $\phi$ 20 (OD) X 3, CAN BE USED AS ALTERNATIVE

NOTE B: ALTERNATIVE MATERIAL

456-2341 H 00 E